

## Supplier payment within 30 days

---

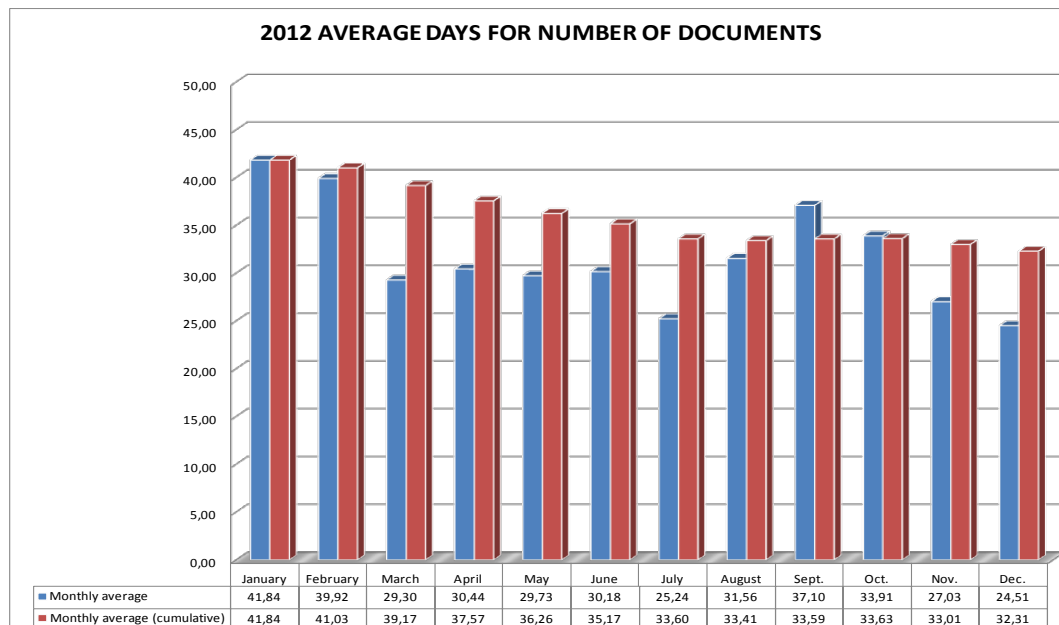
**Government measure:** Barcelona City Council supplier payment within 30 days since the invoice receipt.

**Measure goal:** Favor the liquidity of Barcelona City Council suppliers.

This measure is included in a government strategic objectives package, which also considers budgeting techniques according to the European System of Accounts (ESA95) and setting goals concerning percentages of current saving over current revenues. The following strategic objectives will allow the Barcelona City Council to maintain its remarkable solvency and to boost growth, economic recovery and business competitiveness:

- 1) Favor supplier's liquidity, because of being paid quickly (30 days in 2012).
- 2) Avoid public administrations to take advantage of supplier's leverage as a financing method.
- 3) Avoid the bad practices from certain suppliers of charging the financial costs in the bids presented to public administrations (consequence, increased competitiveness)

City Councils and public institutions must help to create the conditions for present and future economic growth. Starting from what's feasible and what depends directly from the institution it's a good way. If suppliers are paid properly it's because of budget consistency, institution solvency and internal processes conducted with effectiveness.



# Payment indicators within 30 days

## PAYMENT PERIOD BARCELONA CITY COUNCIL

Law 15/2010 of measures against payment slowness to business

2013

SEPTEMBER

### PAYMENT PERIOD MONTHLY INDICATORS : GENERAL MANAGER INSTRUCTION 30.12.2011

Payment period	Days
Payment period average	42,5
<b>Average weighted by amount</b>	<b>34,4</b>

Payment period in days	Number of payment obligations documents	% of payment obligations	Amount paid (in thousands)	% of amount paid
Until 30	472	30,7%	26.134.494	72,2%
Between 31 and 40	143	9,3%	1.760.812	4,9%
Between 41 and 50	476	31,0%	4.064.444	11,2%
Between 51 and 60	249	16,2%	2.139.925	5,9%
Between 61 and 70	124	8,1%	1.302.329	3,6%
More than 70	72	4,7%	814.248	2,3%
<b>TOTAL</b>	<b>1.536</b>	<b>100,0%</b>	<b>36.216.252</b>	<b>100,0%</b>

### DETAIL OF PAYMENT PERIOD AND STAGES BY SECTORS AND DISTRICTS

Sectors and districts	Average period of the stage in days					Number of documents	Amount paid (in thousands)
	Registration / accounting entry	Accounting entry / approval	Approval / treasury limit	Treasury limit /payment order	Registration /payment		
<b>TOTAL CITY COUNCIL</b>	<b>21</b>	<b>10</b>	<b>4</b>	<b>7</b>	<b>43</b>	<b>1.536</b>	<b>36.216</b>
Manager's Office for Resources	21	19	6	7	54	241	689
Manager's Office for Quality of Life, Equality and Sports	20	12	4	6	42	159	1.438
Manager's Office for Prevention, Safety and Mobility	27	8	4	6	45	198	2.271
Manager's Office for Urban Housing	26	9	6	8	58	89	500
Attached Manager's Officer for Environment and Urban Services	13	10	5	7	35	64	18.037
Manager's Office for Economy, Business and Employment	15	19	2	7	43	71	930
Manager's Office for Culture, Knowledge, Creativ. and Innov.							
District Ciutat vella	20	4	1	7	32	55	2.368
District Eixample	21	12	3	6	43	95	1.913
District Sants-Montjuïc	20	5	5	7	37	48	1.190
District Les Corts	26	3	6	6	42	60	479
District Sarrià-St.Genvasi	35	8	6	8	56	90	931
District Gràcia	8	4	4	7	23	39	926
District Horta-Guinardó	20	3	4	6	33	121	923
District Nou Barris	13	13	4	6	37	21	783
District Sant Andreu	13	3	5	7	28	49	646
District Sant Martí	22	6	2	7	37	136	2.191

Average days for numbers of documents (2013)

