



Mandate Report 2008 – 2011



INDEX

1. 1996 – 2011 Period

1. Investment evolution
2. Investment per capita

2. 2008-2011 Period

1. MIP forecast vs completed
2. Estimated impact on jobs creation
3. Typology overview. 2008 – 2011
4. Land overview. 2008 – 2011

3. Highlights

1. Typology overview
2. Land overview

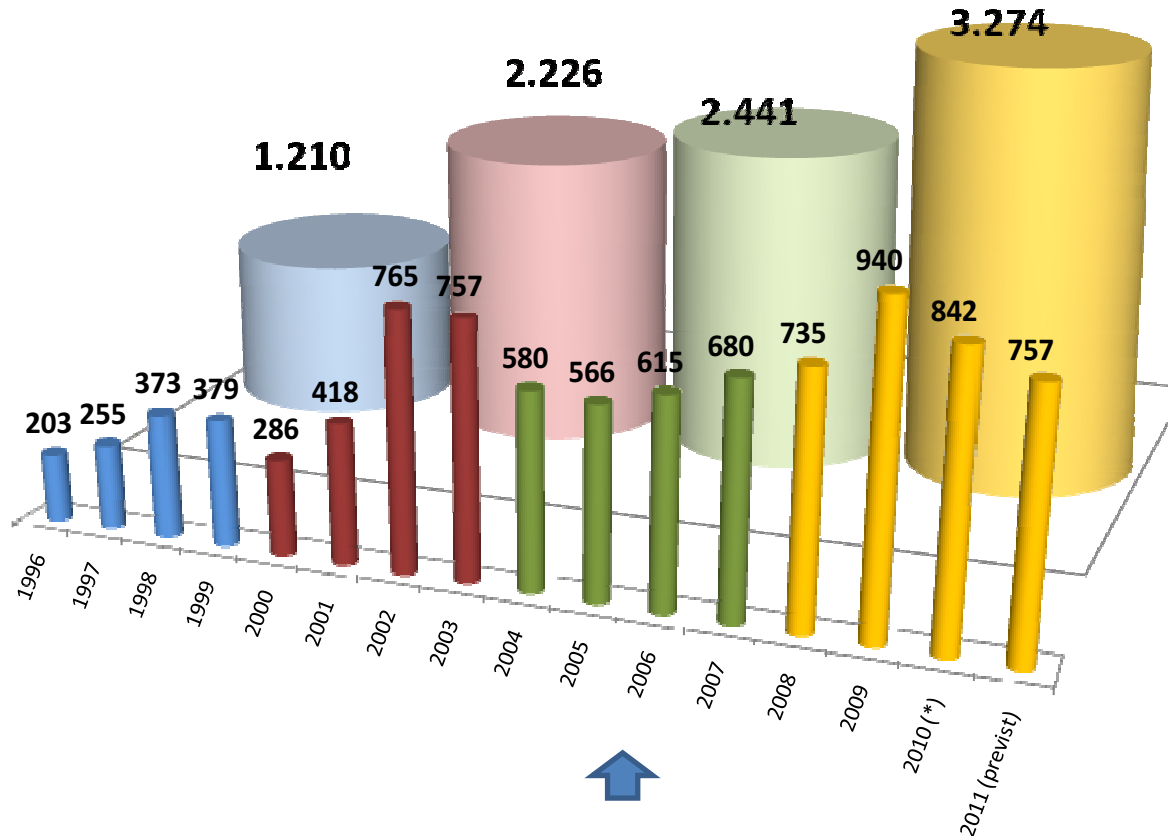


MANDATE REPORT 2008- 2011

INVESTMENT EVOLUTION – 1996-2011 PERIOD



Consolidated municipal investment evolution 1996 - 2011 Period

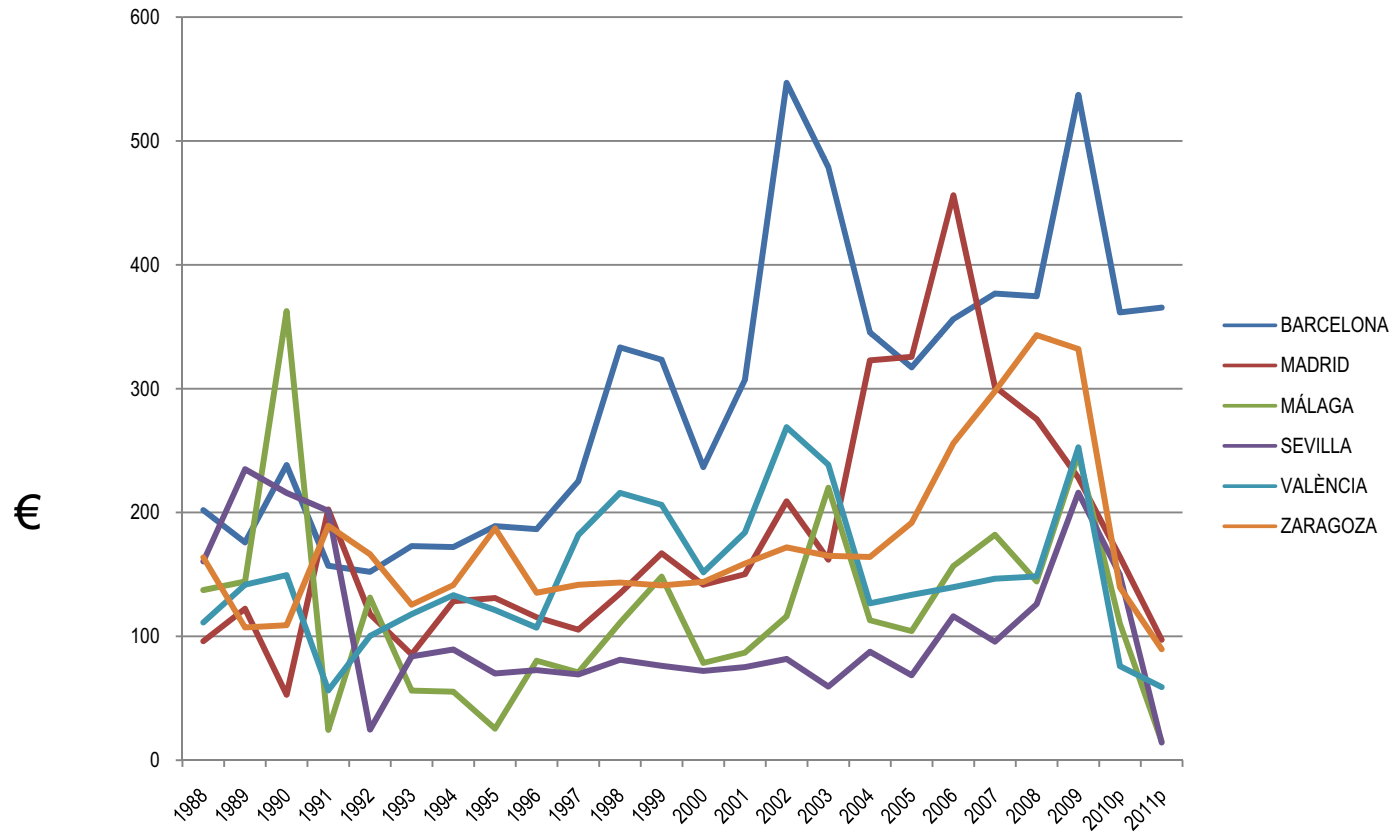


2008 – 2011 period registers the highest municipal investment since 1996

- Consolidated data (1996-2010) & forecast (2011).
- 2009 & 2010 includes Spanish Government funding (FEIL & FEOSL).
- (*) Data pending to consolidate. Includes Barcelona Government, Municipal Agencies (MA) and Subsidiary Companies.



Investment per capita



Barcelona is the city that invests the most per capita

Source: MEH Series (2002-2010), IEF series (1988-2002) & Municipal Investment Budgets 2011 / except Sevilla)
 Considerations: 2010 Remnant Budgets have been applied to Barcelona and Valencia 2011 investment figures

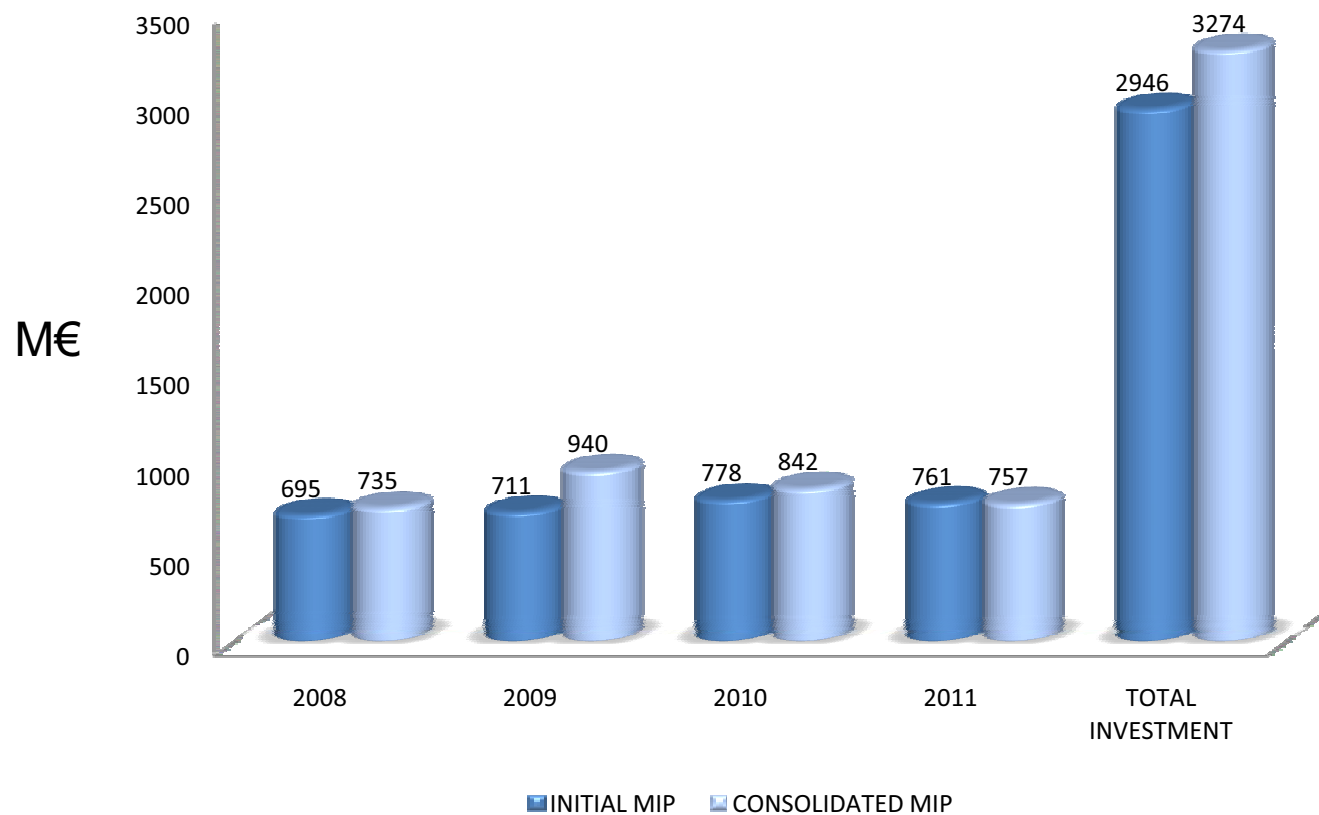


MANDATE REPORT 2008- 2011

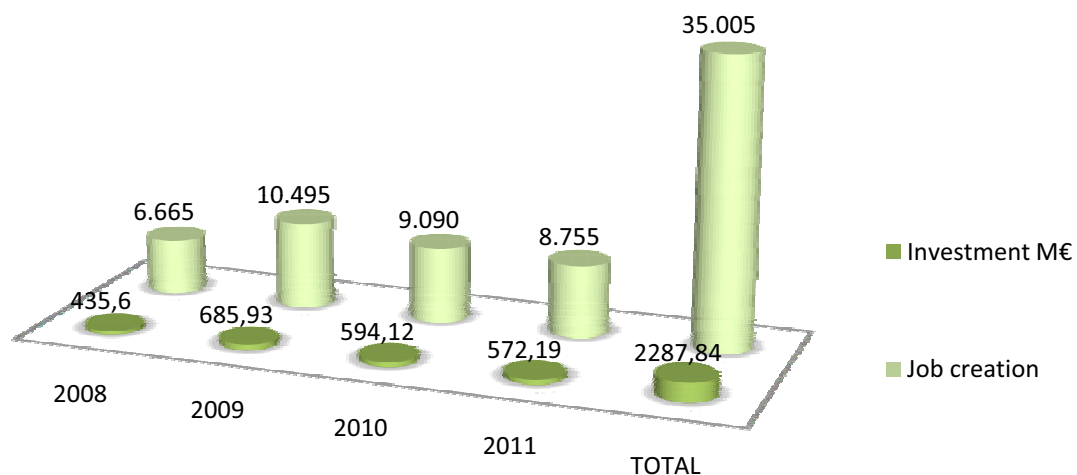
INVESTMENT EVOLUTION – 2008-2011 PERIOD



Municipal Investment Programme (MIP) forecast vs completed



Estimated impact on jobs creation Period 2008-2011



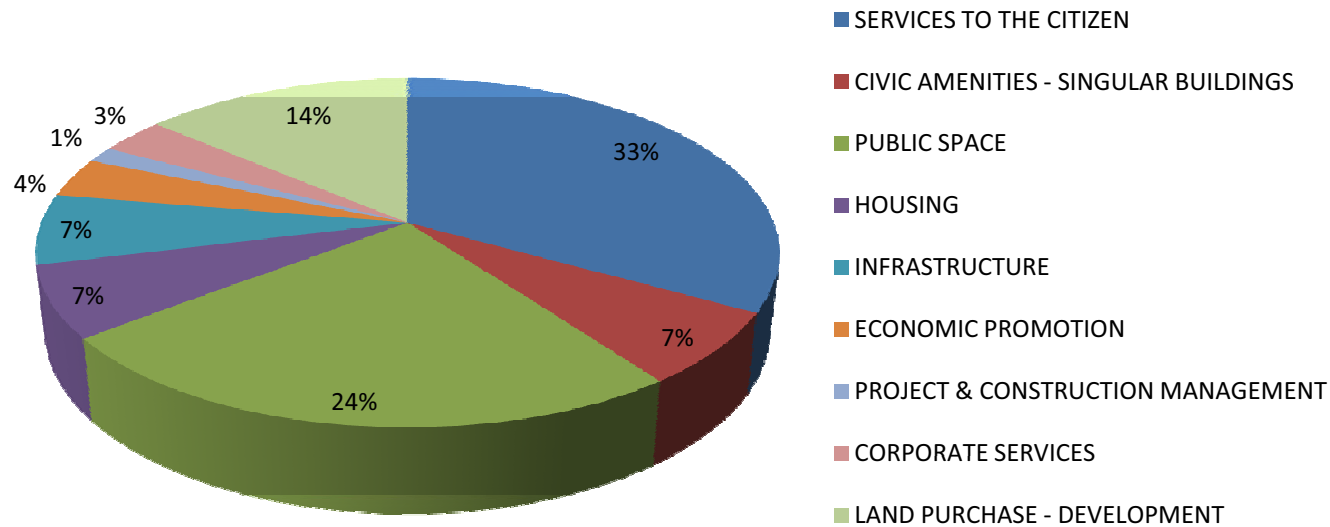
| | M€ invested | Job creation |
|--------------|-----------------|---------------|
| 2008 | 435,6 | 6.665 |
| 2009 | 685,93 | 10.495 |
| 2010 | 594,12 | 9.090 |
| 2011 | 572,19 | 8.755 |
| TOTAL | 2.287,84 | 35.005 |

Source: Data has been elaborated by the Communication Department of Barcelona Government, considering investment figures delivered by the Investment Department, 2005 Catalonia Input-Output chart and Catalonia Construction Costs Index.



Typology overview 2008 - 2011

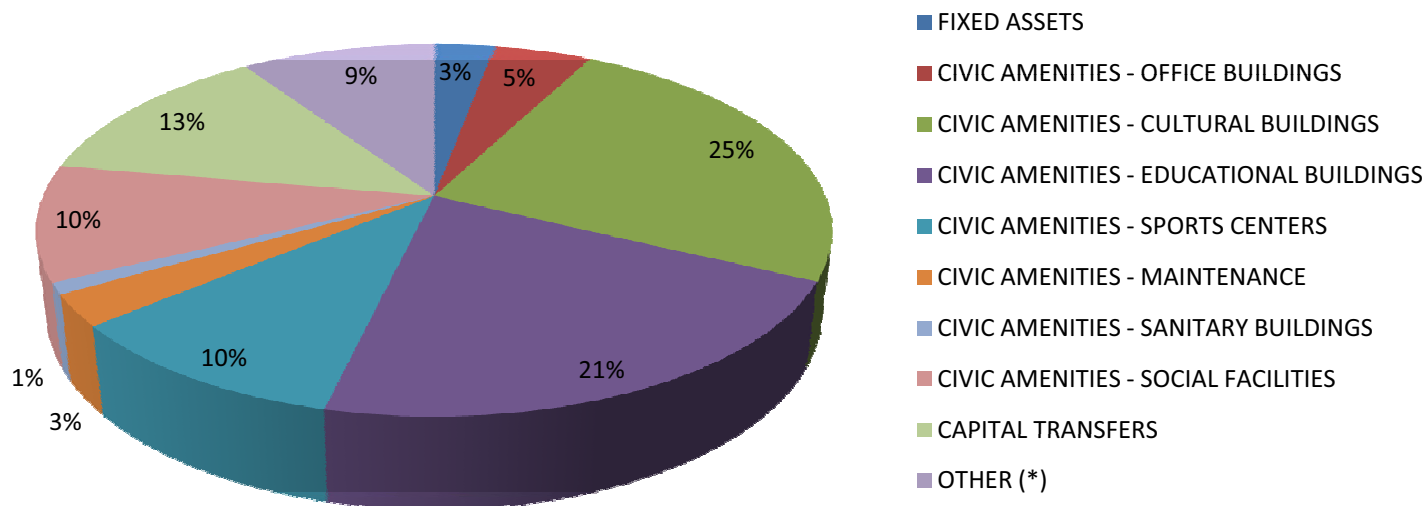
Typology



| TYPOLGY | TOTAL INVESTMENT (M€) | INVESTMENT PROJECTS (UT) |
|--------------------------------------|-----------------------|--------------------------|
| SERVICES TO THE CITIZEN | 1.086,50 | 575 |
| CIVIC AMENITIES - SINGULAR BUILDINGS | 220,52 | 44 |
| PUBLIC SPACE | 803,13 | 496 |
| HOUSING | 218,58 | 123 |
| INFRASTRUCTURE | 214,03 | 142 |
| ECONOMIC PROMOTION | 120,71 | 83 |
| PROJECT & CONSTRUCTION MANAGEMENT | 47,60 | 42 |
| CORPORATE SERVICES | 110,00 | 106 |
| LAND PURCHASE - DEVELOPMENT | 452,59 | 263 |
| TOTAL | 3.273,66 | 1874 |

Typology overview 2008 - 2011

Services to the Citizen



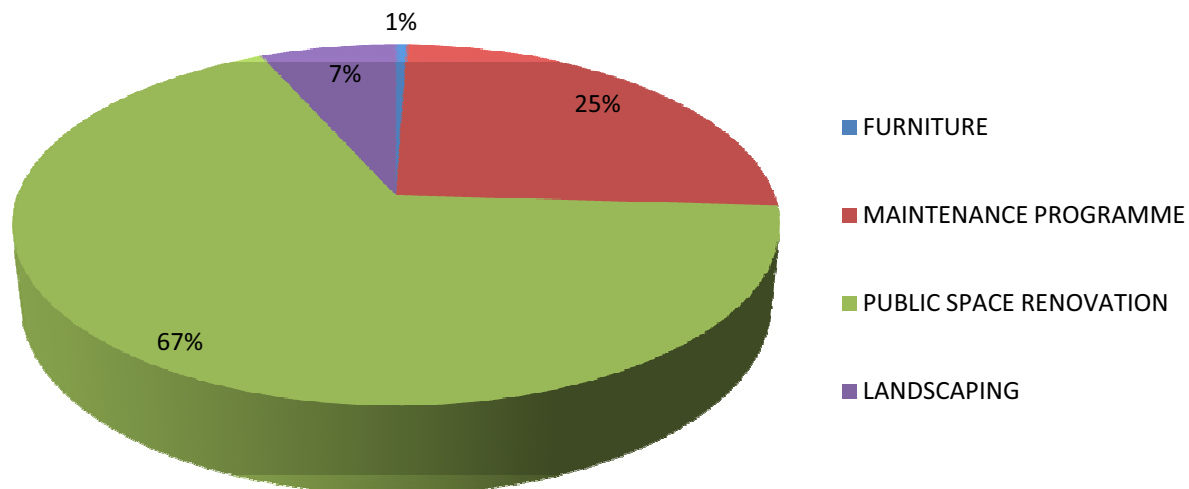
| TYPOLGY | TOTAL INVESTMENT (M€) | INVESTMENT PROJECTS (UT) |
|-----------------------------------------|-----------------------|--------------------------|
| FIXED ASSETS | 31,77 | 77 |
| CIVIC AMENITIES - OFFICE BUILDINGS | 51,54 | 62 |
| CIVIC AMENITIES - CULTURAL BUILDINGS | 267,48 | 109 |
| CIVIC AMENITIES - EDUCATIONAL BUILDINGS | 232,55 | 74 |
| CIVIC AMENITIES - SPORTS CENTERS | 111,08 | 84 |
| CIVIC AMENITIES - MAINTENANCE | 29,81 | 26 |
| CIVIC AMENITIES - SANITARY BUILDINGS | 10,37 | 14 |
| CIVIC AMENITIES - SOCIAL FACILITIES | 110,02 | 117 |
| CAPITAL TRANSFERS | 139,53 | 12 |
| OTHER (*) | 102,34 | - |
| TOTAL | 1.086,50 | 575 |

(*) Outstanding investments to be approved by the Local Government, according with the 11th clause established in the Municipal Investment Programme (MIP)



Typology overview 2008 - 2011

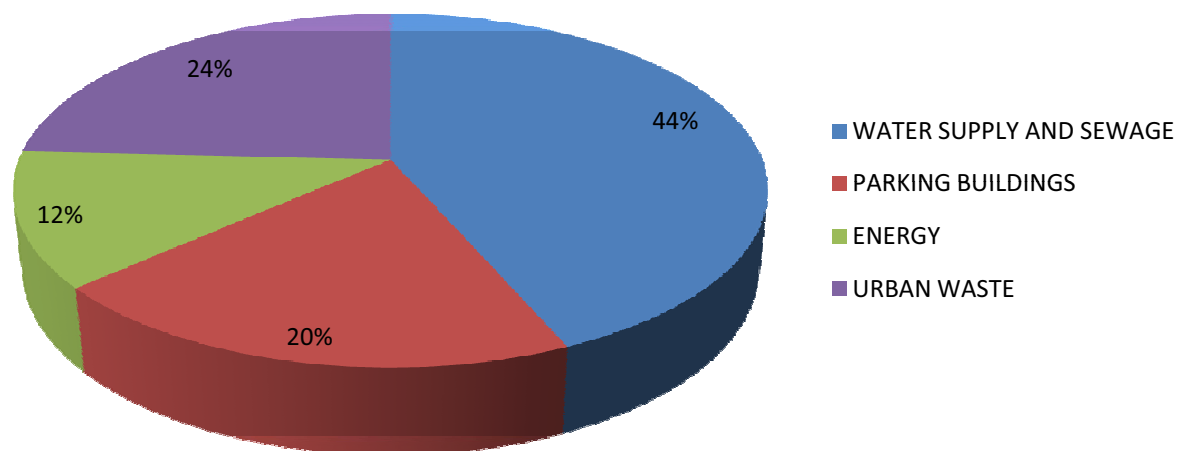
Public Space



| TYOLOGY | TOTAL INVESTMENT (M€) | INVESTMENT PROJECTS (UT) |
|-------------------------|-----------------------|--------------------------|
| FURNITURE | 4,10 | 10 |
| MAINTENANCE PROGRAMME | 203,91 | 36 |
| PUBLIC SPACE RENOVATION | 541,37 | 390 |
| LANDSCAPING | 53,75 | 60 |
| TOTAL | 803,13 | 496 |

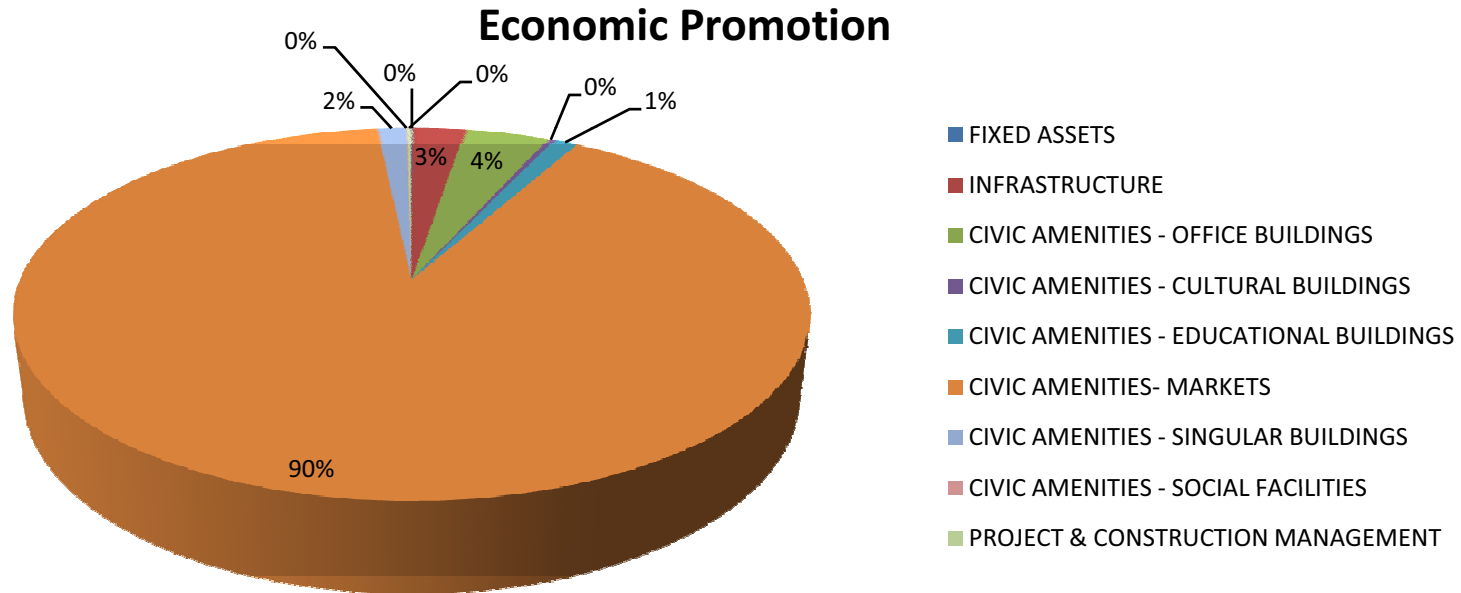
Typology overview 2008 - 2011

Infrastructure



| TYPOLOGY | TOTAL INVESTMENT (M€) | INVESTMENT PROJECTS (UT) |
|-------------------------|-----------------------|--------------------------|
| WATER SUPPLY AND SEWAGE | 93,04 | 46 |
| PARKING BUILDINGS | 42,72 | 33 |
| ENERGY | 26,47 | 25 |
| URBAN WASTE | 51,80 | 38 |
| TOTAL | 214,03 | 142 |

Typology overview 2008 - 2011

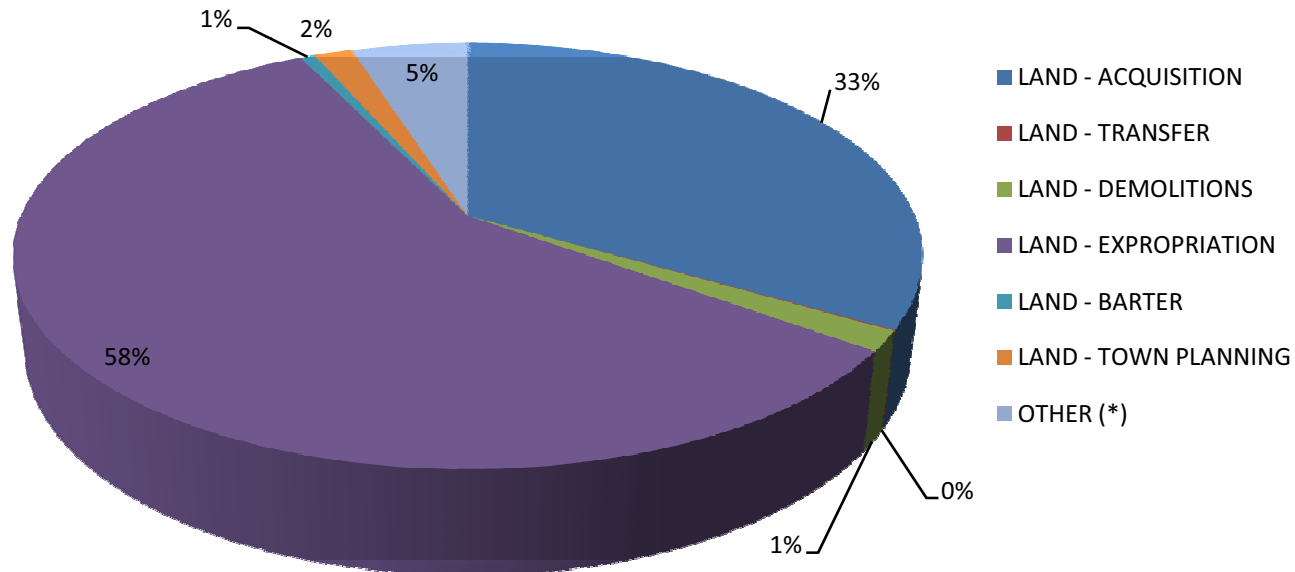


| TYOLOGY | TOTAL INVESTMENT (M€) | INVESTMENT PROJECTS (UT) |
|-----------------------------------------|-----------------------|--------------------------|
| FIXED ASSETS | 0,05 | 1 |
| INFRASTRUCTURE | 3,11 | 7 |
| CIVIC AMENITIES - OFFICE BUILDINGS | 4,92 | 4 |
| CIVIC AMENITIES - CULTURAL BUILDINGS | 0,36 | 2 |
| CIVIC AMENITIES - EDUCATIONAL BUILDINGS | 1,41 | 5 |
| CIVIC AMENITIES - MARKETS | 108,87 | 59 |
| CIVIC AMENITIES - SINGULAR BUILDINGS | 1,67 | 2 |
| CIVIC AMENITIES - SOCIAL FACILITIES | 0,06 | 1 |
| PROJECT & CONSTRUCTION MANAGEMENT | 0,26 | 2 |
| TOTAL | 120,71 | 83 |



Typology overview 2008 - 2011

Land

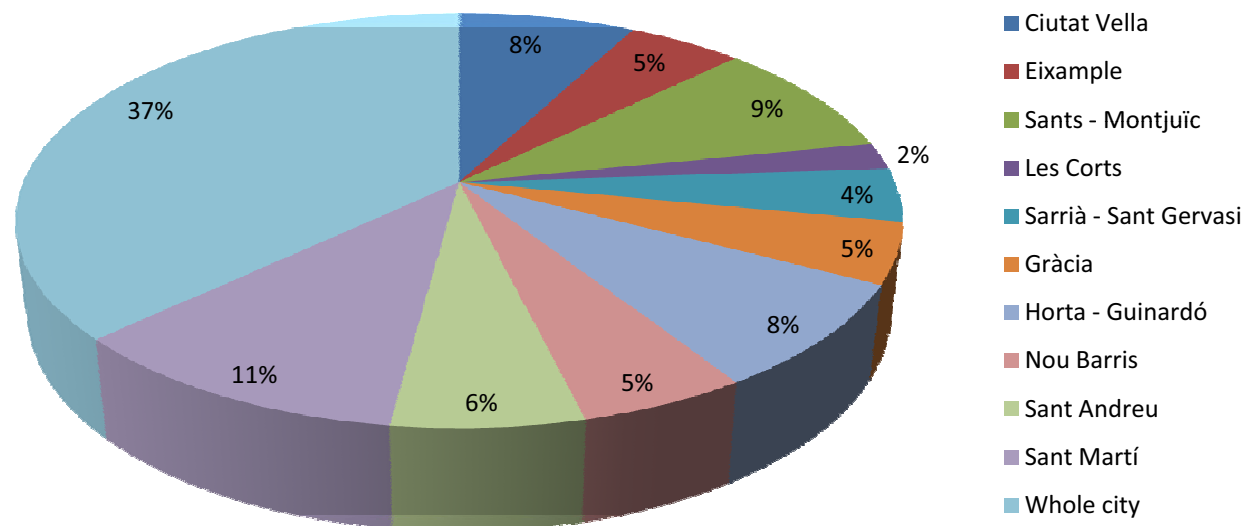


| TYPOLGY | TOTAL INVESTMENT (M€) | INVESTMENT PROJECTS (UT) |
|----------------------|-----------------------|--------------------------|
| LAND - ACQUISITION | 151,09 | 44 |
| LAND - TRANSFER | 0,30 | 2 |
| LAND - DEMOLITIONS | 6,87 | 14 |
| LAND - EXPROPRIATION | 261,79 | 180 |
| LAND - BARTER | 2,80 | 6 |
| LAND - TOWN PLANNING | 7,37 | 17 |
| OTHER (*) | 22,38 | - |
| TOTAL (*) | 430,20 | 263 |

(*) Outstanding investments to be approved by the Local Government, according with the 11th clause established in the Municipal Investment Programme (MIP)



Land overview 2008 - 2011



| DISTRICT | TOTAL INVESTMENT (M€) | INVESTMENT PROJECTS (UT) |
|-----------------------|-----------------------|--------------------------|
| Ciutat Vella | 252,15 | 190 |
| Eixample | 164,12 | 102 |
| Sants - Montjuïc | 298,14 | 174 |
| Les Corts | 68,44 | 80 |
| Sarrià - Sant Gervasi | 136,01 | 139 |
| Gràcia | 154,18 | 109 |
| Horta - Guinardó | 269,46 | 199 |
| Nou Barris | 169,46 | 178 |
| Sant Andreu | 192,61 | 132 |
| Sant Martí | 355,15 | 233 |
| Whole city | 1.213,96 | 338 |
| TOTAL | 3.273,66 | 1.874 |

MANDATE REPORT 2008- 2011

HIGHLIGHTS – TYPOLOGY OVERVIEW



SERVICES TO THE CITIZEN / CIVIC AMENITIES / OFFICE BUILDINGS

Total Investment figures

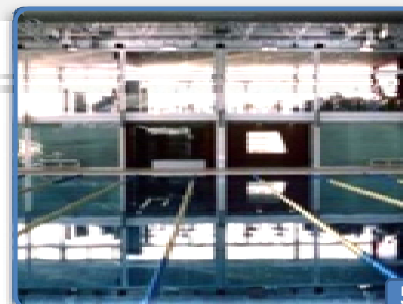
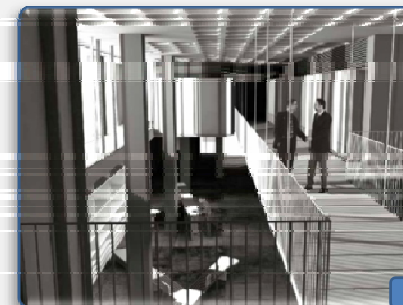
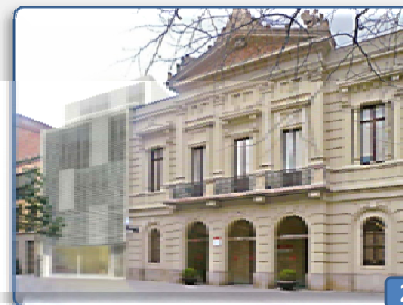
| | |
|-------------|----------|
| 2008 | 8,92 M€ |
| 2009 | 19,82 M€ |
| 2010 | 14,92 M€ |
| 2011 | 7,88 M€ |

62

Investment Projects
(Units)

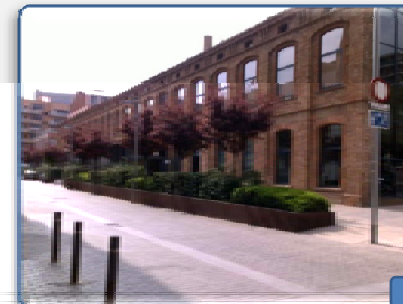
51,54 M€

Investment (M€)



Highlights

1. Firemen Headquarters
2. Les Corts district Headquarters
3. Incubator
4. City Hall maintenance programme
5. MA Barcelona Esports Headquarters
6. Zona Franca Police Headquarters
7. Sants district Headquarters
8. Horta-Guinardó district Municipal Information Center (OAC)
9. Can Jaumeandreu Amenities Building



SERVICES TO THE CITIZEN / CIVIC AMENITIES / CULTURAL BUILDINGS

Total Investment figures

| | |
|-------------|----------|
| 2008 | 60,57 M€ |
| 2009 | 60,82 M€ |
| 2010 | 79,62 M€ |
| 2011 | 66,47 M€ |

109

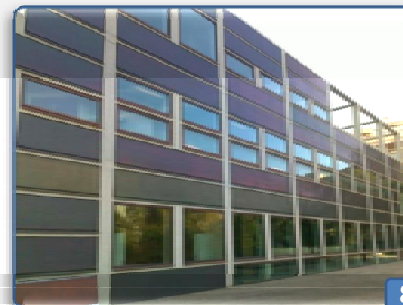
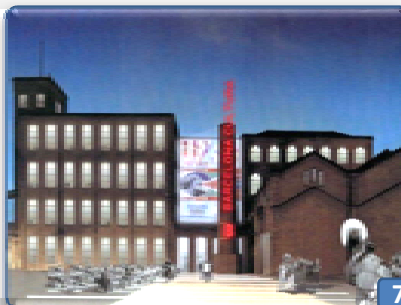
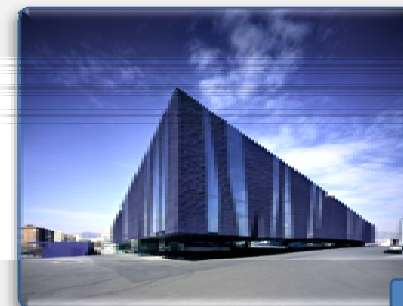
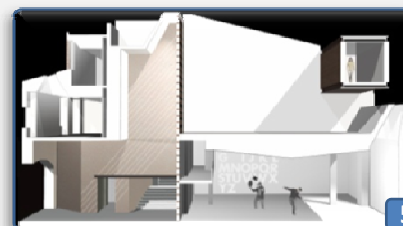
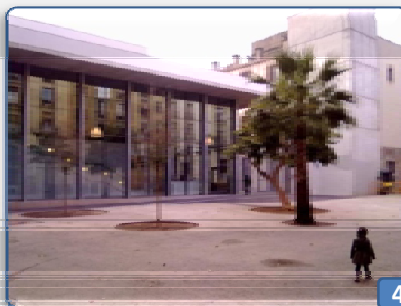
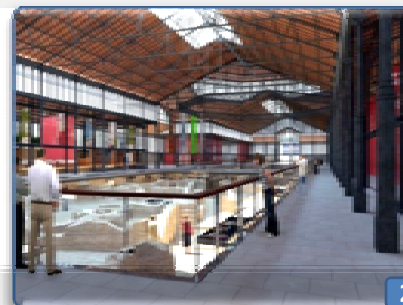
Investment Projects
(Units)

267,48 M€

Investment (M€)

Highlights

1. Disseny HUB
2. Born
3. Mercat de les Flors
4. Picasso Museum Annex
5. La Seca
6. Natural Sciences Museum
7. Fabra i Coats
8. Sala 4 Auditori
9. Regomir 7 refurbishment



SERVICES TO THE CITIZEN / CIVIC AMENITIES / EDUCATIONAL BUILDINGS

Total Investment figures

| | |
|-------------|----------|
| 2008 | 40,07 M€ |
| 2009 | 79,75 M€ |
| 2010 | 59,34 M€ |
| 2011 | 53,38 M€ |

74

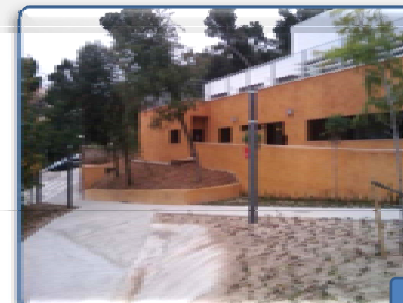
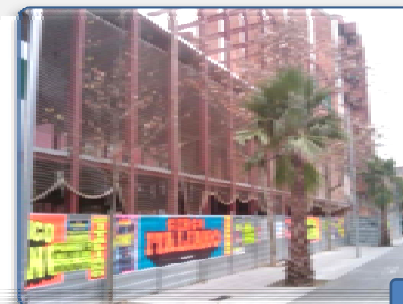
Investment Projects
(Units)

232,55 M€

Investment (M€)

Highlights

1. Harmonia Nursery School & Baloo School
2. Tàber Nursery School
3. Antaviana School & Nursery School
4. Pere Vila School renovation
5. Patronat Domènech School
6. Els Llorers Nursery School
7. Olzinelles Nursery School
8. Ramon Berenguer III School renovation
9. Reis Catòlics Nursery School



SERVICES TO THE CITIZEN / CIVIC AMENITIES / SPORT CENTERS

Total Investment figures

| | |
|-------------|----------|
| 2008 | 14,82 M€ |
| 2009 | 41,20 M€ |
| 2010 | 35,37 M€ |
| 2011 | 19,69 M€ |

84

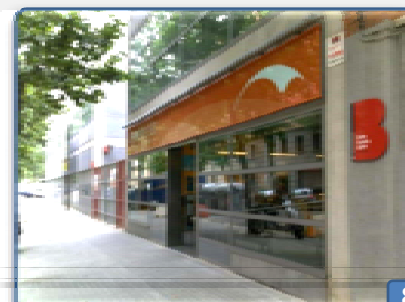
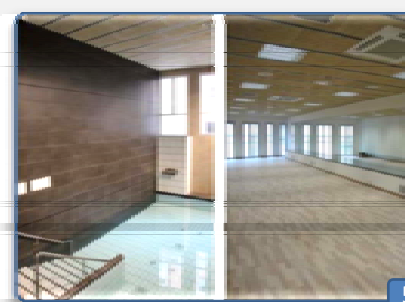
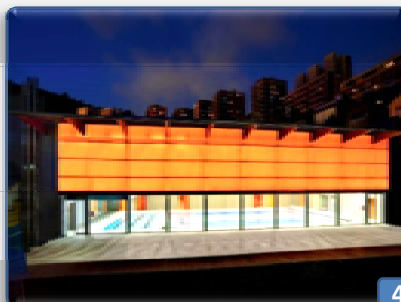
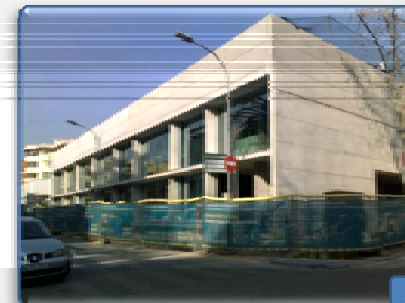
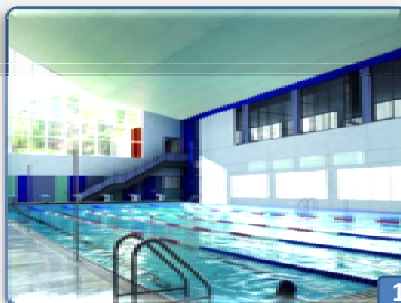
Investment Projects
(Units)

111,08 M€

Investment (M€)

Highlights

1. Llars Mundet Sport Center renovation
2. Ciutadella Sport Center
3. Horta Sport Center
4. Can Toda Sport Center refurbishment
5. Sagrada Família Sport Center renovation
6. Serrahima Stadium Renovation
7. Cotxeres Borbó Sport Center
8. Júpiter Sport Center refurbishment
9. Pau Negre Sport Center renovation



SERVICES TO THE CITIZEN / CIVIC AMENITIES / MAINTENANCE PROGRAMME

Total Investment figures

| | |
|-------------|----------|
| 2008 | 11,52 M€ |
| 2009 | 10,54 M€ |
| 2010 | 4,03 M€ |
| 2011 | 3,72 M€ |

26

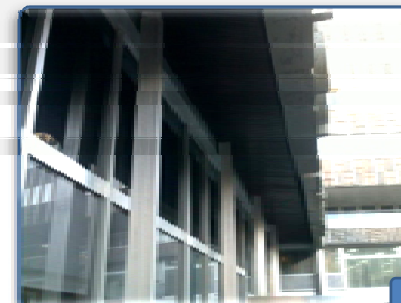
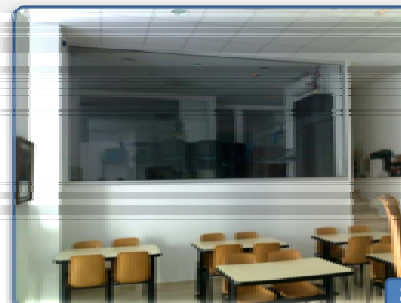
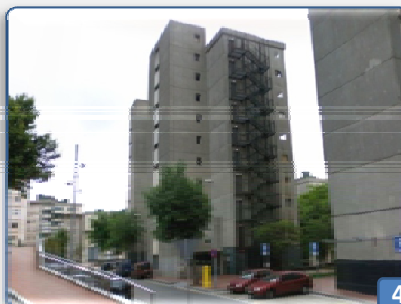
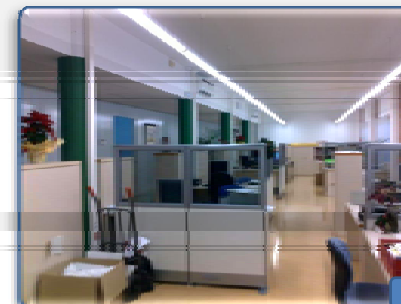
Investment Projects
(Units)

29,81 M€

Investment (M€)

Highlights

1. Sants district facilities maintenance
2. Ciutat Vella district facilities maintenance
3. Sant Martí district facilities maintenance
4. Nou Barris district facilities maintenance
5. Casa de La Lactància façade renovation
6. Sants district civic amenities renovation
7. Joan Miró Park center
8. Andreu Nin, 58 renovation
9. Pl. St. Miquel façade renovation



SERVICES TO THE CITIZEN / CIVIC AMENITIES / SANITARY BUILDINGS

Total Investment figures

| | |
|------|---------|
| 2008 | 0,31 M€ |
| 2009 | 5,73 M€ |
| 2010 | 1,21 M€ |
| 2011 | 3,11 M€ |

14

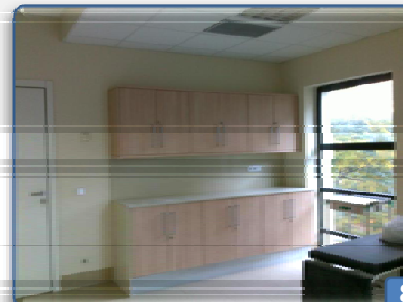
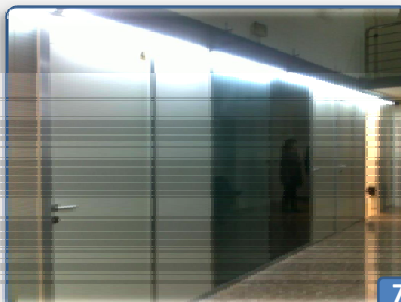
Investment Projects
(Units)

10,37 M€

Investment (M€)

Highlights

1. La Bordeta sanitary building
2. Sant Pau Hospital renovation
3. Santa Apolònia refurbishment
4. Sant Pau Infrastructure 1st phase
5. Hospital Sant Pau infrastructure services
6. Perecamps Laboratory
7. Sants district CAS renovation
8. Garbivent CAS renovation
9. CAP Horta façade refurbishment



SERVICES TO THE CITIZEN / CIVIC AMENITIES / SOCIAL FACILITIES

Total Investment figures

| | |
|-------------|----------|
| 2008 | 19,84 M€ |
| 2009 | 37,13 M€ |
| 2010 | 32,94 M€ |
| 2011 | 20,09 M€ |

117

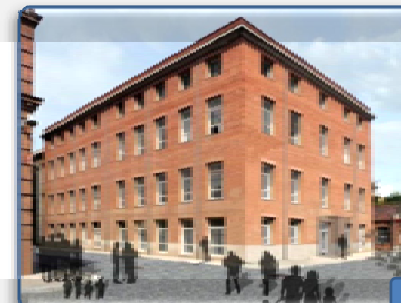
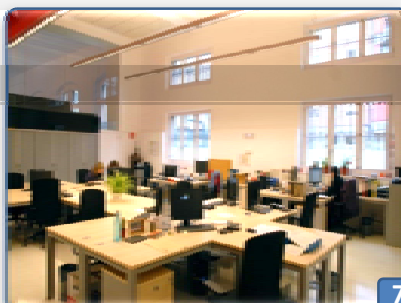
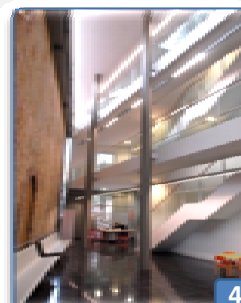
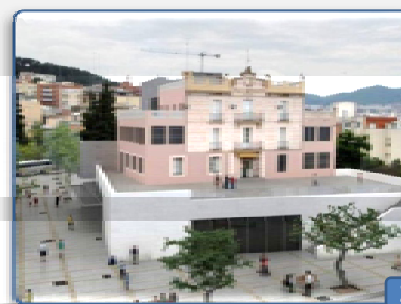
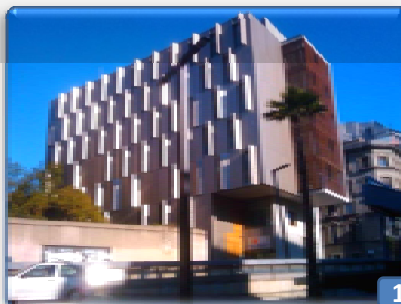
Investment Projects
(Units)

110,02 M€

Investment (M€)

Highlights

1. Marquès de Santa Anna, 1-9
2. Mas Guinardó facility
3. Alchemika
4. Raval Social facility
5. Folch i Torres facility
6. C. Ripoll, 25 refurbishment
7. Baix Guinardó social facility
8. Serveis Campo Sagrado housing
9. Fabra i Coats facility



CIVIC AMENITIES / SINGULAR BUILDINGS

Total Investment figures

| | |
|-------------|----------|
| 2008 | 73,76 M€ |
| 2009 | 37,12 M€ |
| 2010 | 66,56 M€ |
| 2011 | 43,09 M€ |

44

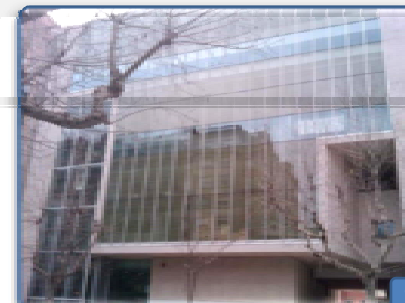
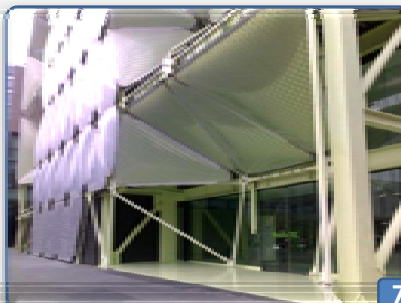
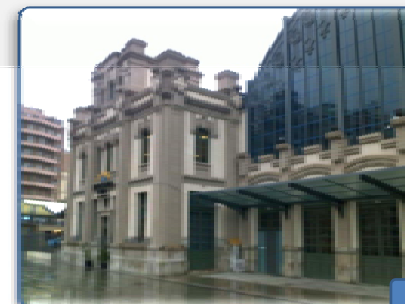
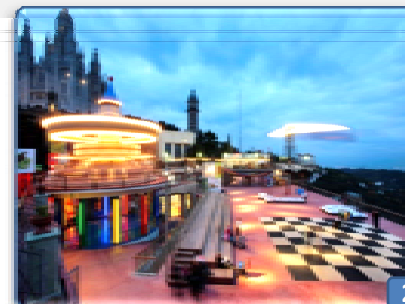
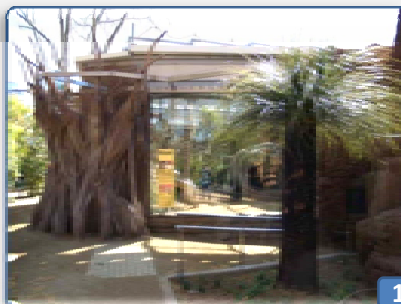
Investment Projects
(Units)

220,52 M€

Investment (M€)

Highlights

1. Barcelona Zoo
2. Tibidabo Leisure Park
3. Sea Zoo preliminary structural works
4. Canòdrom
5. Montjuïc Castle
6. Estació del Nord Bus station
7. ICT Cluster
8. Fòrum
9. Comte Urgell, 145 facility



PUBLIC SPACE / MAINTENANCE PROGRAMME

Total Investment figures

| | |
|-------------|----------|
| 2008 | 14,20 M€ |
| 2009 | 74,85 M€ |
| 2010 | 74,36 M€ |
| 2011 | 40,50 M€ |

36

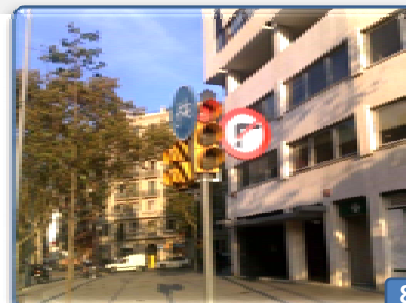
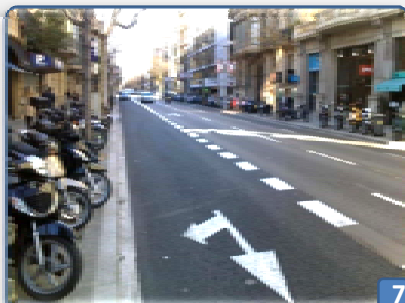
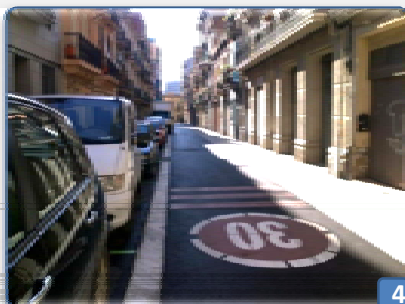
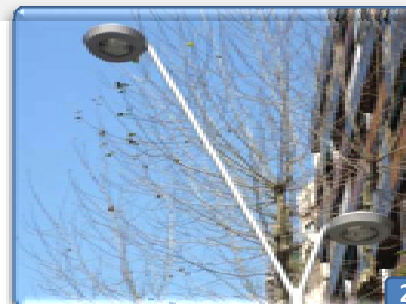
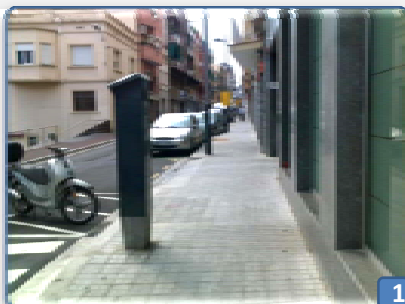
Investment Projects
(Units)

203,91 M€

Investment (M€)

Highlights

1. Full treatment and street renovation
2. Light decontamination
3. Horizontal signage
4. Sants maintenance programme
5. Sant Andreu maintenance programme
6. Anti vandalism treatment
7. Ciutat Vella & Eixample maintenance programme
8. Vertical signage
9. Horta-Guinardó public space renovation



PUBLIC SPACE / RENOVATION

Total Investment figures

| | |
|-------------|-----------|
| 2008 | 132,07 M€ |
| 2009 | 180,95 M€ |
| 2010 | 160,53 M€ |
| 2011 | 67,81 M€ |

390

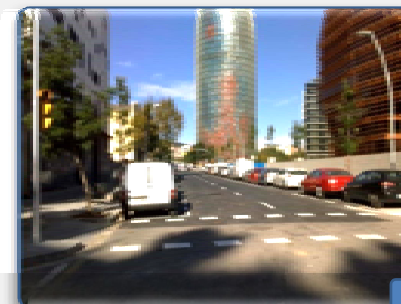
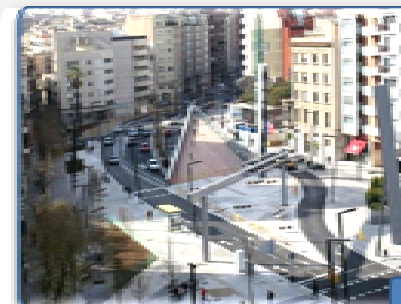
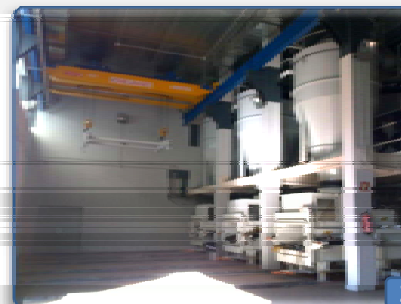
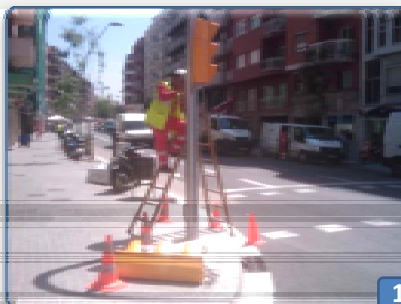
Investment Projects
(Units)

541,37 M€

Investment (M€)

Highlights

1. Traffic lights network renovation
2. Infraestructura Infraestructure Plan
3. Lesseps Square refurbishment
4. Sea Zoo development
5. Railway coverage
6. Granada-Ramon Turró Street renovation
7. Rda. del Mig. Boca sud túnel Rovira
8. La Bordeta development
9. Pg. Santa Coloma renovation



PUBLIC SPACE / LANDSCAPING

Total Investment figures

| | |
|-------------|----------|
| 2008 | 10,37 M€ |
| 2009 | 21,32 M€ |
| 2010 | 13,31 M€ |
| 2011 | 8,74 M€ |

60

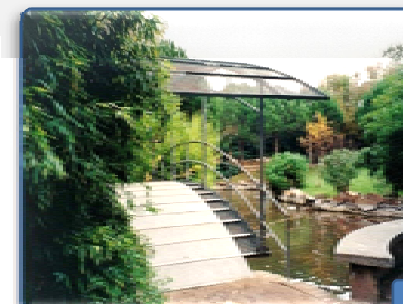
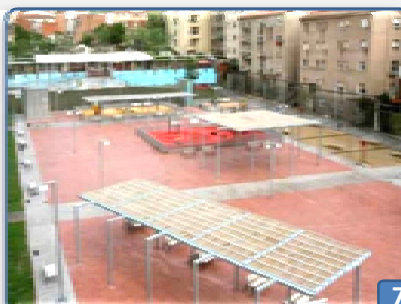
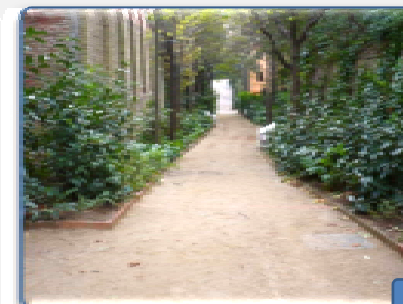
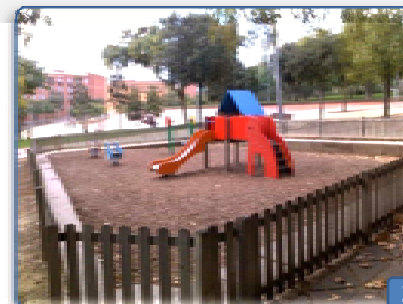
Investment Projects
(Units)

53,75 M€

Investment (M€)

Highlights

1. Poblenou Central Park
2. Playground programme
3. Espanya Industrial Park
4. Ornamental fountains refurbishment
5. Aigües del Clot Park
6. Tamarita Gardens renovation
7. Parc de la Unitat renovation
8. Parc del Putget renovation
9. Parc de la Pegaso renovation



HOUSING

Total Investment figures

| | |
|-------------|----------|
| 2008 | 40,97 M€ |
| 2009 | 50,93 M€ |
| 2010 | 62,68 M€ |
| 2011 | 64,00 M€ |

123

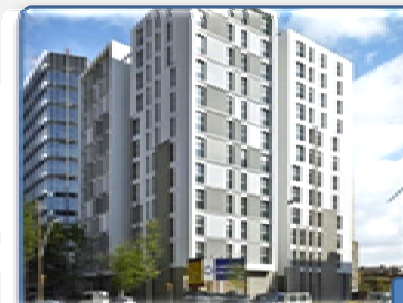
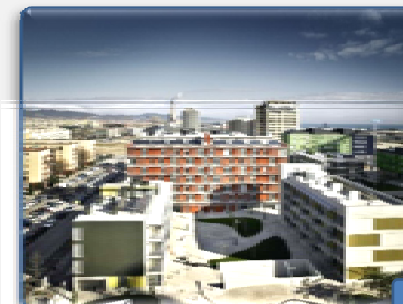
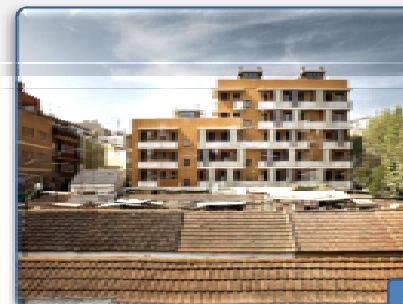
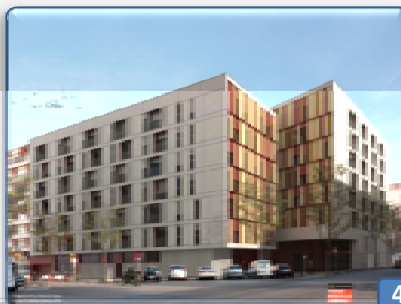
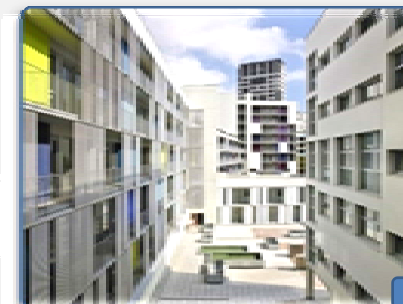
Investment Projects
(Units)

218,58 M€

Investment (M€)

Highlights

1. Folch i Torres development
2. Can Travi development
3. Camí Antic de València development
4. Navas de Tolosa development
5. Bon Pastor development
6. Forum development
7. Valldaura - Can Cortada development
8. Via Favència development
9. Ciutat de Granada development



INFRASTRUCTURE / URBAN SERVICES

Total Investment figures

| | |
|-------------|----------|
| 2008 | 39,45 M€ |
| 2009 | 74,67 M€ |
| 2010 | 57,40 M€ |
| 2011 | 42,51 M€ |

142

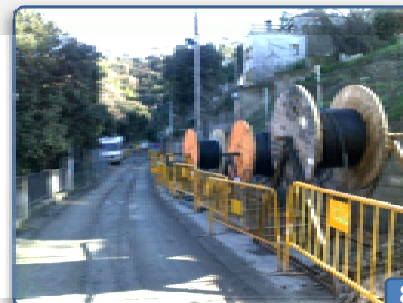
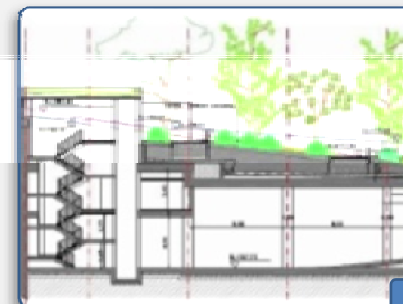
Investment Projects
(Units)

214,03 M€

Investment (M€)

Highlights

1. Torrent dels Garrofers collector
2. Sewage improvement
3. València-Calabria Parking
4. Bilbao-Llull Parking
5. Urgell Depot
6. Torrent dels Maduixers facility center
7. Lesseps urban waste center
8. Electric cabling burying programme
9. Energy Generation Central



ECONOMIC PROMOTION

Total Investment figures

| | |
|-------------|----------|
| 2008 | 17,69 M€ |
| 2009 | 25,13 M€ |
| 2010 | 20,61 M€ |
| 2011 | 57,28 M€ |

83

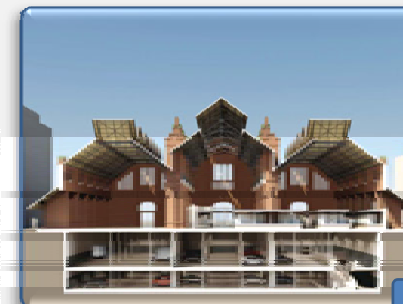
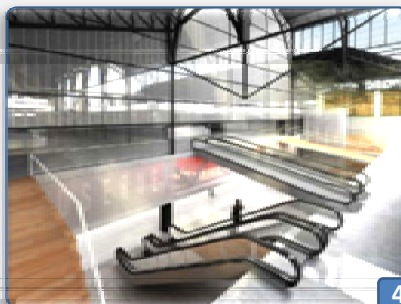
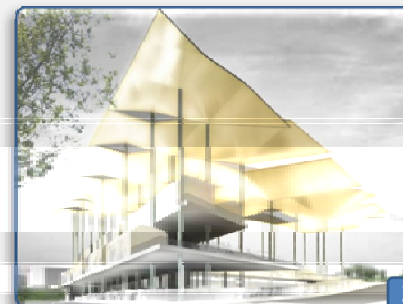
Investment Projects
(Units)

120,71 M€

Investment (M€)

Highlights

1. Sant Antoni Market
2. Encants Market
3. Llibertat Market
4. Ninot Market
5. Ninot Temporary Market
6. Sants Market
7. Sants Temporary Market
8. Bon Pastor Temporary Market
9. Les Corts Market



LAND

Total Investment figures

| | |
|-------------|-----------|
| 2008 | 184,44 M€ |
| 2009 | 126,27 M€ |
| 2010 | 109,78 M€ |
| 2011 | 32,08 M€ |

263

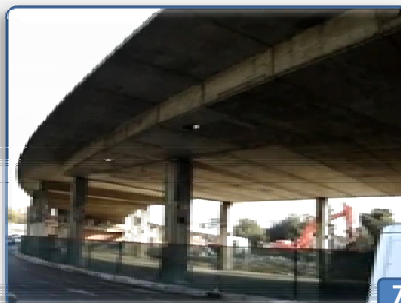
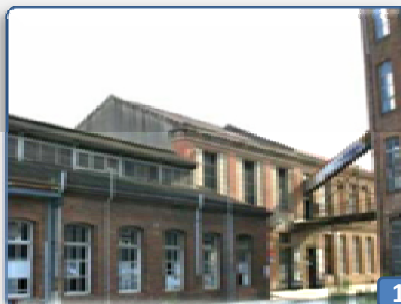
Investment Projects
(Units)

452,59 M€

Investment (M€)

Highlights

1. Fabra i Coats land purchase
2. Ideal Flor demolitions
3. Olzinelles, 73 demolitions
4. Font de la Guatlla demolitions
5. Gardunya land purchase
6. UGT building acquisition
7. Glòries roundabout demolition
8. Benavent, 22 acquisition
9. Waldorf acquisition



MANDATE REPORT 2008- 2011

HIGHLIGHTS LAND OVERVIEW



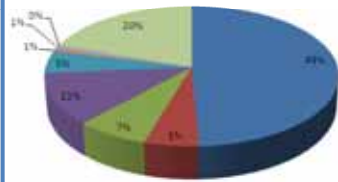
CIUTAT VELLA DISTRICT

190

Investment Units

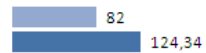
252,15

Investment M€



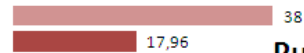
- SERVICES TO THE CITIZEN
- CIVIC AMENITIES - SINGULAR BUILDINGS
- PUBLIC SPACE
- HOUSING
- INFRASTRUCTURE
- ECONOMIC PROMOTION
- PROJECT & CONSTRUCTION MANAGEMENT
- CORPORATE SERVICES
- LAND

■ INVESTMENT PROJECTS ■ INVESTMENT M€



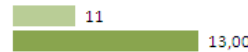
Services to the citizen

■ INVESTMENT PROJECTS ■ INVESTMENT M€



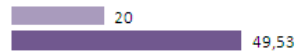
Public Space

■ INVESTMENT PROJECTS ■ INVESTMENT M€



Infrastructure

■ INVESTMENT PROJECTS ■ INVESTMENT M€

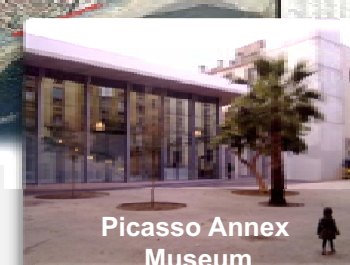
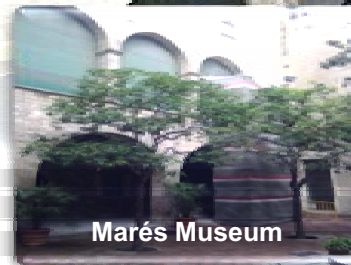
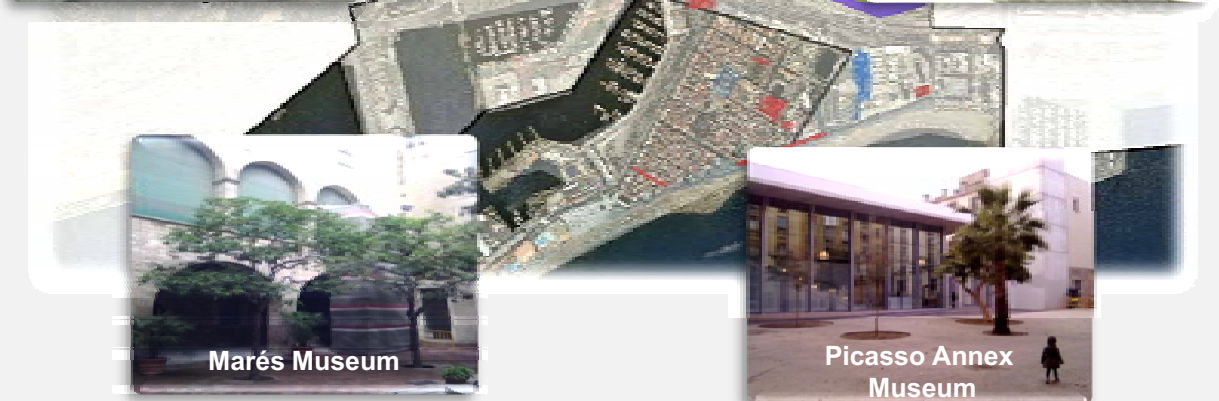


Land

■ INVESTMENT PROJECTS ■ INVESTMENT M€



Housing



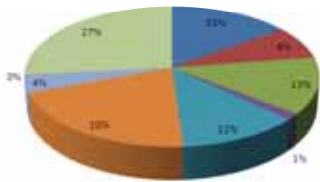
EIXAMPLE DISTRICT

102

Investment Units

164,12

Investment M€



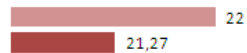
- SERVICES TO THE CITIZEN
- CIVIC AMENITIES - SINGULAR BUILDINGS
- PUBLIC SPACE
- HOUSING
- INFRASTRUCTURE
- ECONOMIC PROMOTION
- PROJECT & CONSTRUCTION MANAGEMENT
- CORPORATE SERVICES
- LAND

■ INVESTMENT PROJECTS ■ INVESTMENT M€



Services to the citizen

■ INVESTMENT PROJECTS ■ INVESTMENT M€



Public Space

■ INVESTMENT PROJECTS ■ INVESTMENT M€



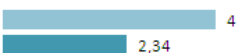
Infrastructure

■ INVESTMENT PROJECTS ■ INVESTMENT M€

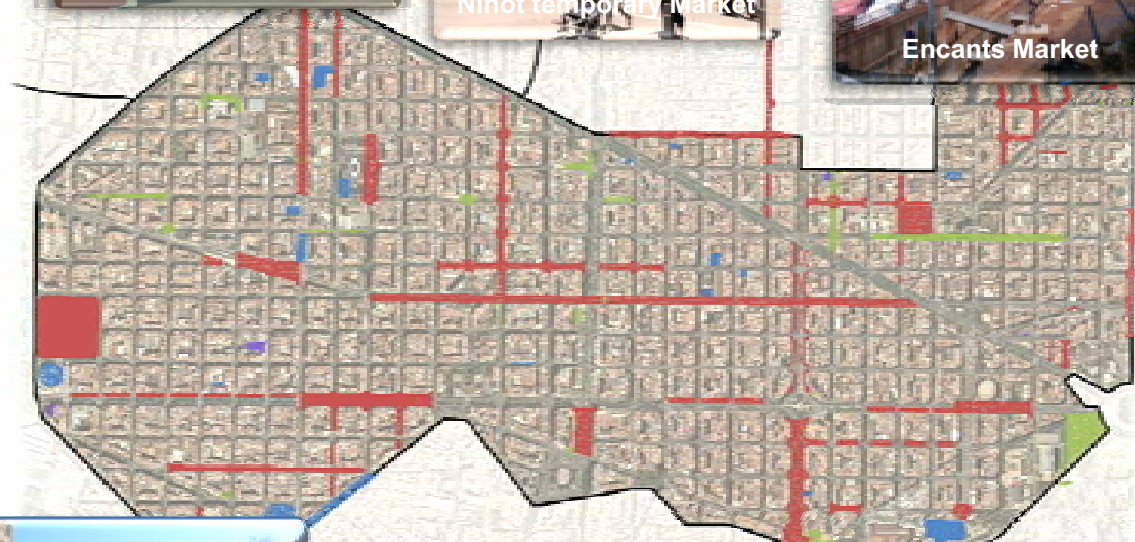
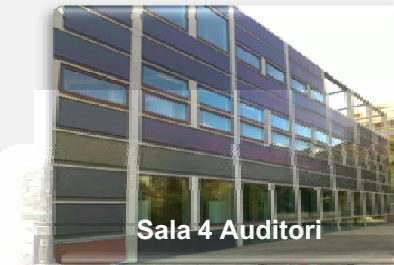


Land

■ INVESTMENT PROJECTS ■ INVESTMENT M€



Housing



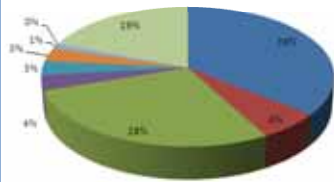
SANTS-MONTJUÏC DISTRICT

174

Investment Units

298,14

Investment M€



- SERVICES TO THE CITIZEN
- CIVIC AMENITIES - SINGULAR BUILDINGS
- PUBLIC SPACE
- HOUSING
- INFRASTRUCTURE
- ECONOMIC PROMOTION
- PROJECT & CONSTRUCTION MANAGEMENT
- CORPORATE SERVICES
- LAND

■ INVESTMENT PROJECTS ■ INVESTMENT M€

64 106,79

Services to the citizen

41 82,79

Public Space

9 9,67

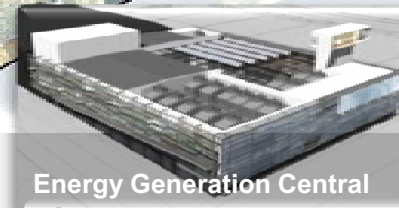
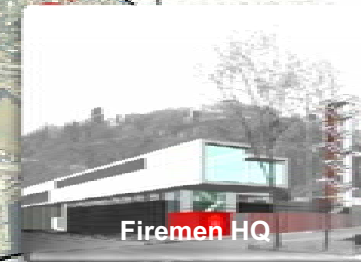
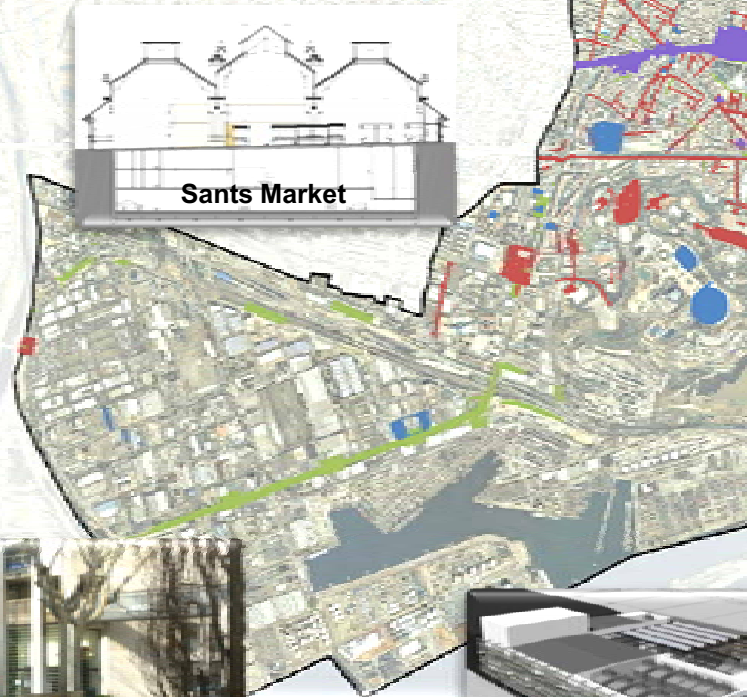
Infrastructure

31 57,11

Land

15 10,36

Housing



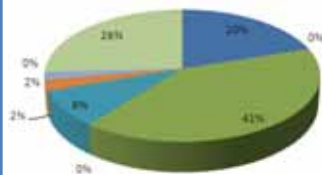
LES CORTS DISTRICT

80

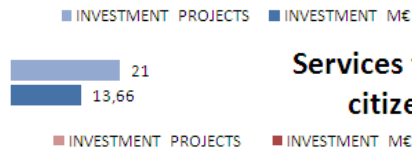
Investment Units

68,44

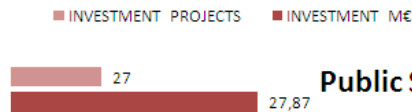
Investment M€



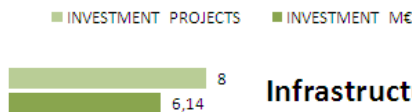
- SERVICES TO THE CITIZEN
- CIVIC AMENITIES - SINGULAR BUILDINGS
- PUBLIC SPACE
- HOUSING
- INFRASTRUCTURE
- ECONOMIC PROMOTION
- PROJECT & CONSTRUCTION MANAGEMENT
- CORPORATE SERVICES



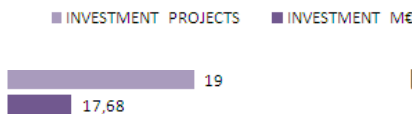
Services to the citizen



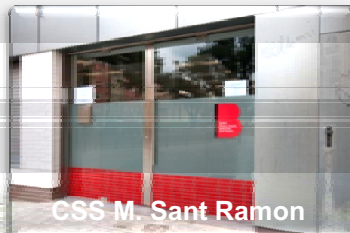
Public Space



Infrastructure



Land



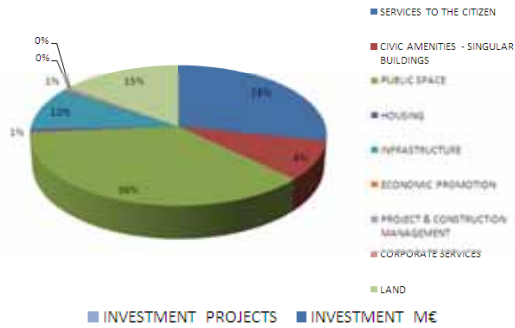
SARRIÀ-SANT GERVASI DISTRICT

139

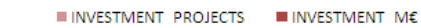
Investment Units

136,01

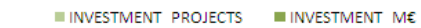
Investment M€



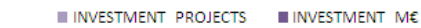
Services to the citizen



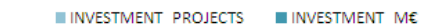
Public Space



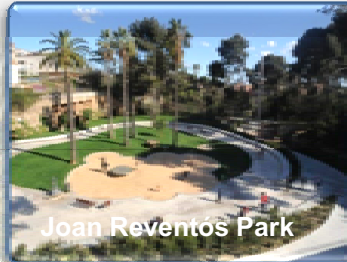
Infrastructure



Land



Housing



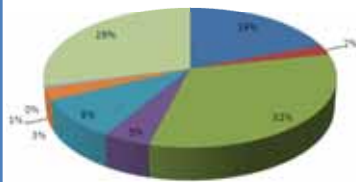
GRÀCIA DISTRICT

109

Investment Units

154,18

Investment M€



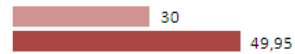
- SERVICES TO THE CITIZEN
- CIVIC AMENITIES - SINGULAR BUILDINGS
- PUBLIC SPACE
- HOUSING
- INFRASTRUCTURE
- ECONOMIC PROMOTION
- PROJECT & CONSTRUCTION MANAGEMENT
- CORPORATE SERVICES
- LAND

■ INVESTMENT PROJECTS ■ INVESTMENT M€



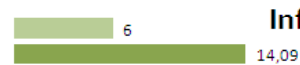
Services to the citizen

■ INVESTMENT PROJECTS ■ INVESTMENT M€



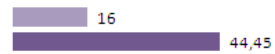
Public Space

■ INVESTMENT PROJECTS ■ INVESTMENT M€



Infrastructure

■ INVESTMENT PROJECTS ■ INVESTMENT M€

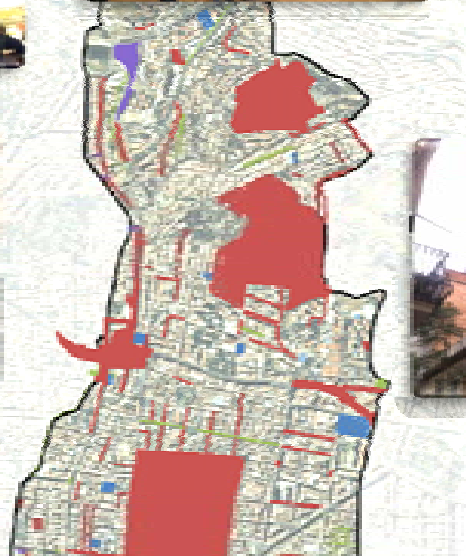
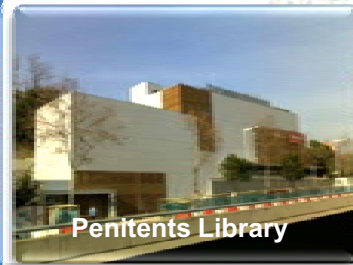
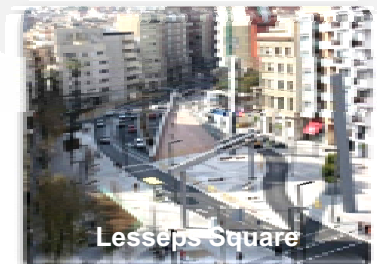


Land

■ INVESTMENT PROJECTS ■ INVESTMENT M€



Housing



HORTA-GUINARDÓ DISTRICT

199

Investment Units

269,46

Investment M€



- SERVICES TO THE CITIZEN
- CIVIC AMENITIES - SINGULAR BUILDINGS
- PUBLIC SPACE
- HOUSING
- INFRASTRUCTURE
- ECONOMIC PROMOTION
- PROJECT & CONSTRUCTION MANAGEMENT
- CORPORATE SERVICES
- LAND

■ INVESTMENT PROJECTS ■ INVESTMENT M€

50
59,99

Services to the citizen

■ INVESTMENT PROJECTS ■ INVESTMENT M€

63
80,66

Public Space

■ INVESTMENT PROJECTS ■ INVESTMENT M€

13
37,08

Infrastructure

■ INVESTMENT PROJECTS ■ INVESTMENT M€

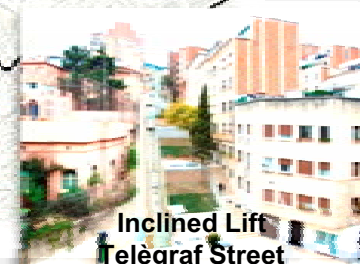
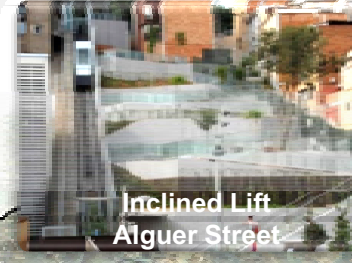
48
56,46

Land

■ INVESTMENT PROJECTS ■ INVESTMENT M€

10
24,84

Housing



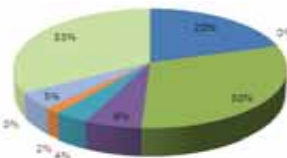
NOU BARRIS DISTRICT

178

Investment Units

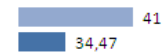
169,46

Investment M€



- SERVICES TO THE CITIZEN
- CIVIC AMENITIES - SINGULAR BUILDINGS
- PUBLIC SPACE
- HOUSING
- INFRASTRUCTURE
- ECONOMIC PROMOTION
- PROJECT & CONSTRUCTION MANAGEMENT
- CORPORATE SERVICES
- LAND

■ INVESTMENT PROJECTS ■ INVESTMENT M€



Services to the citizen

■ INVESTMENT PROJECTS ■ INVESTMENT M€



Public Space

■ INVESTMENT PROJECTS ■ INVESTMENT M€



Infrastructure

■ INVESTMENT PROJECTS ■ INVESTMENT M€

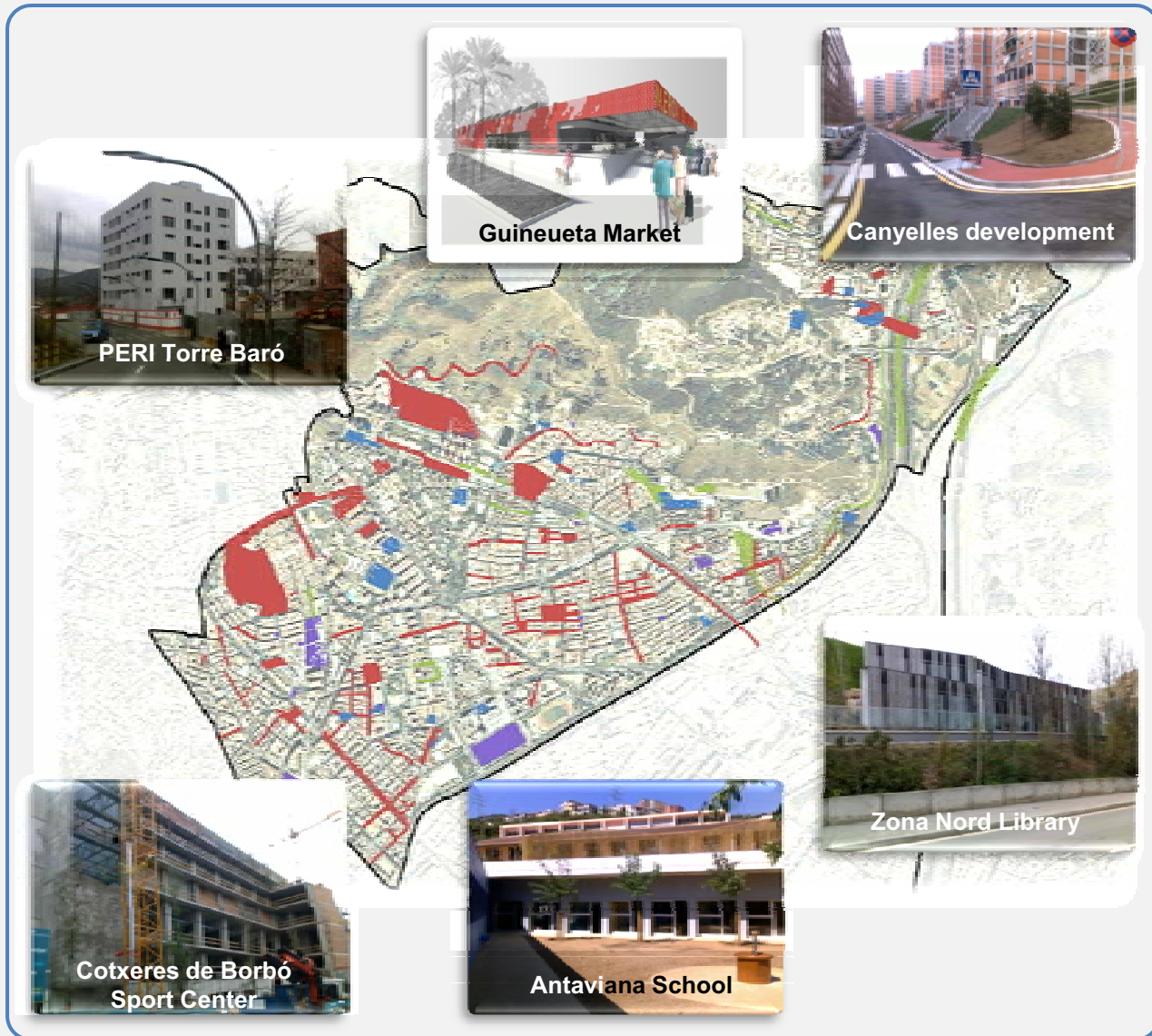


Land

■ INVESTMENT PROJECTS ■ INVESTMENT M€



Housing



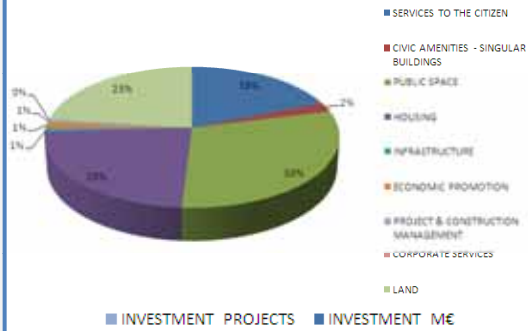
SANT ANDREU DISTRICT

132

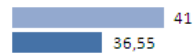
Investment Units

192,61

Investment M€

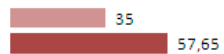


Services to the citizen



INVESTMENT PROJECTS INVESTMENT M€

Public Space



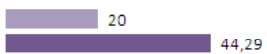
INVESTMENT PROJECTS INVESTMENT M€

Infrastructure



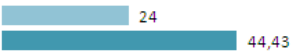
INVESTMENT PROJECTS INVESTMENT M€

Land



INVESTMENT PROJECTS INVESTMENT M€

Housing



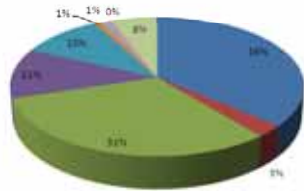
INVESTMENT PROJECTS INVESTMENT M€



SANT MARTÍ DISTRICT

233

Investment Units



355,15

Investment M€

